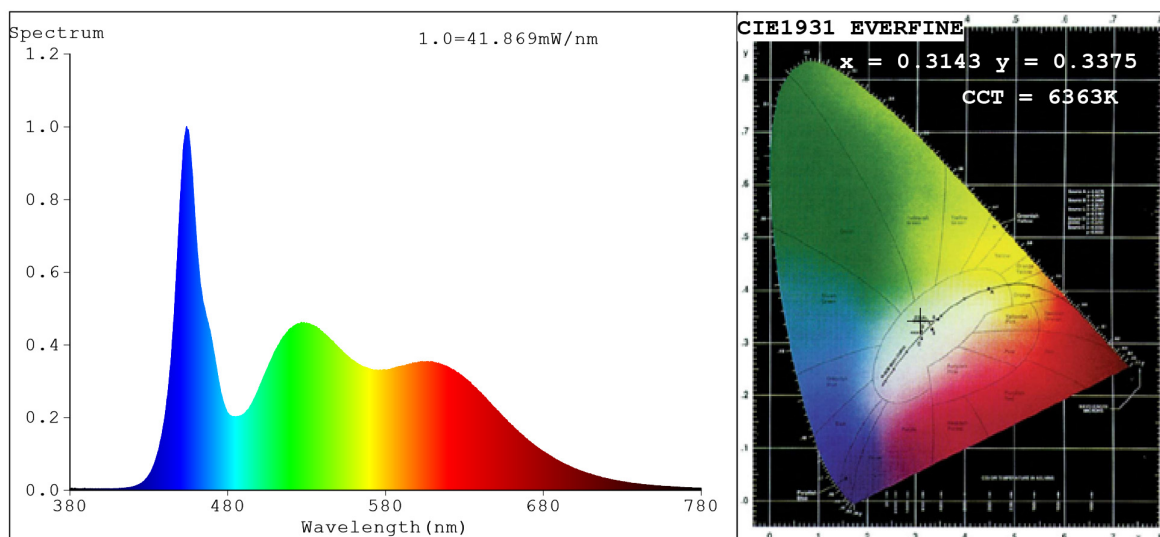


Spectrum Test Report



Color Parameters:

Chromaticity Coordinate: $x=0.3143$ $y=0.3375$ / $u'=0.1958$ $v'=0.4731$
 CCT=6363K (Duv=0.0067) Dominant WL:Ld =494.5nm Purity=6.2%
 Ratio:R=15.2% G=79.0% B=5.7%; Peak WL:Lp=453.9nm FWHM=19.0nm
 Render Index:Ra=92.6 CRI=87.9 TM30:Rf=89 Rg=98
 R1 =94 R2 =94 R3 =92 R4 =94 R5 =92 R6 =91 R7 =96
 R8 =88 R9 =65 R10=84 R11=92 R12=58 R13=95 R14=95 R15=91

Photo Parameters:

Flux = 1116 lm Eff. : 106.41 lm/W Fe = 3.729 W Scotopic:2608.4 S/P:2.3378

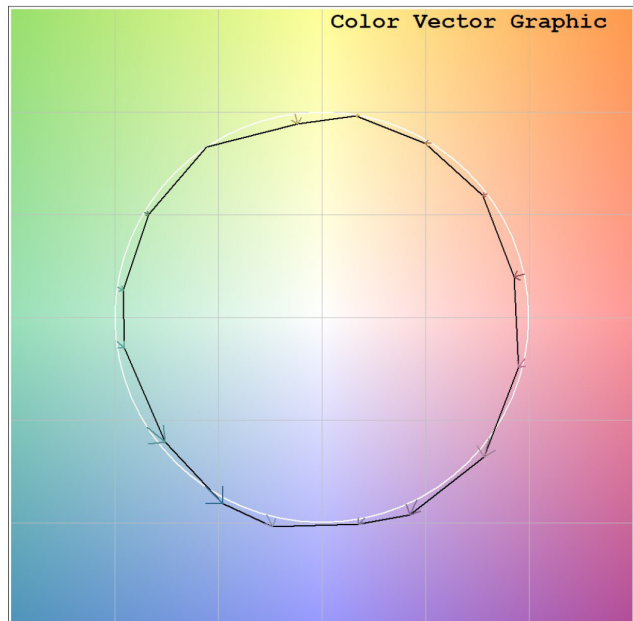
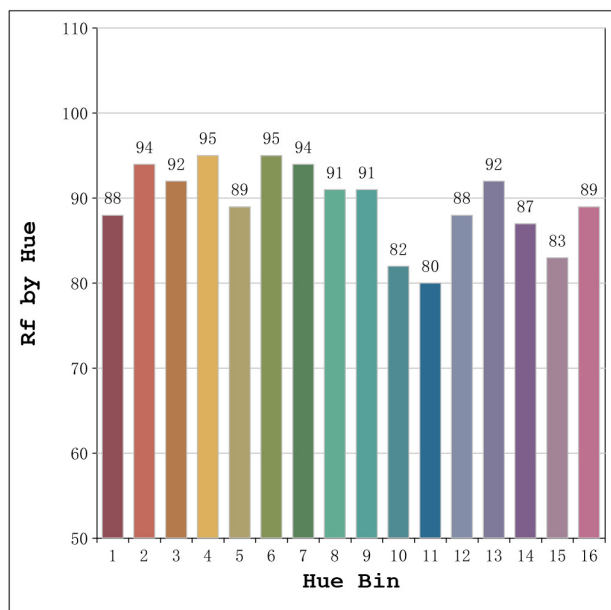
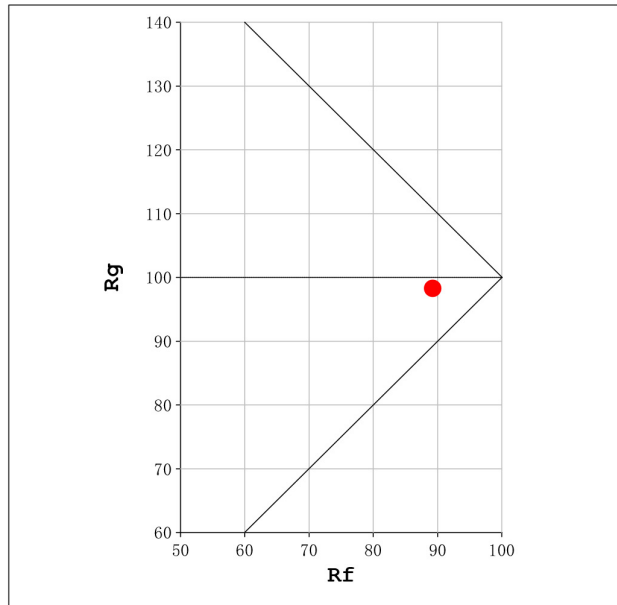
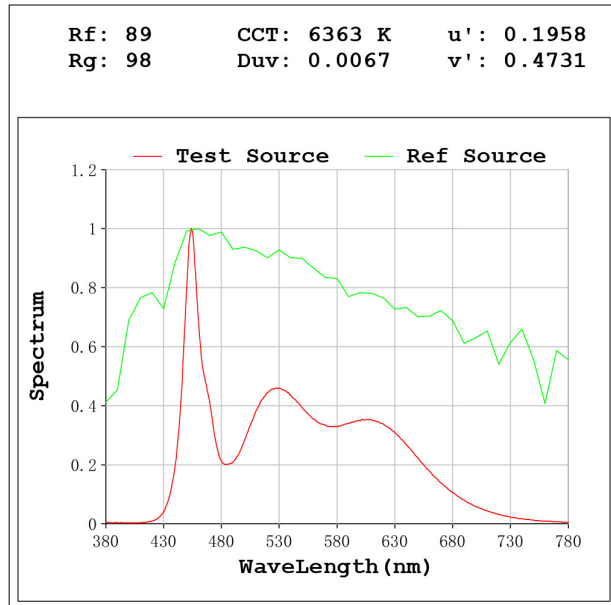
Electrical parameters:

V = 23.998 V I = 0.4369 A P = 10.48 W PF = 1.000

Status: Integral T = 722 ms Ip = 44323 (68%)

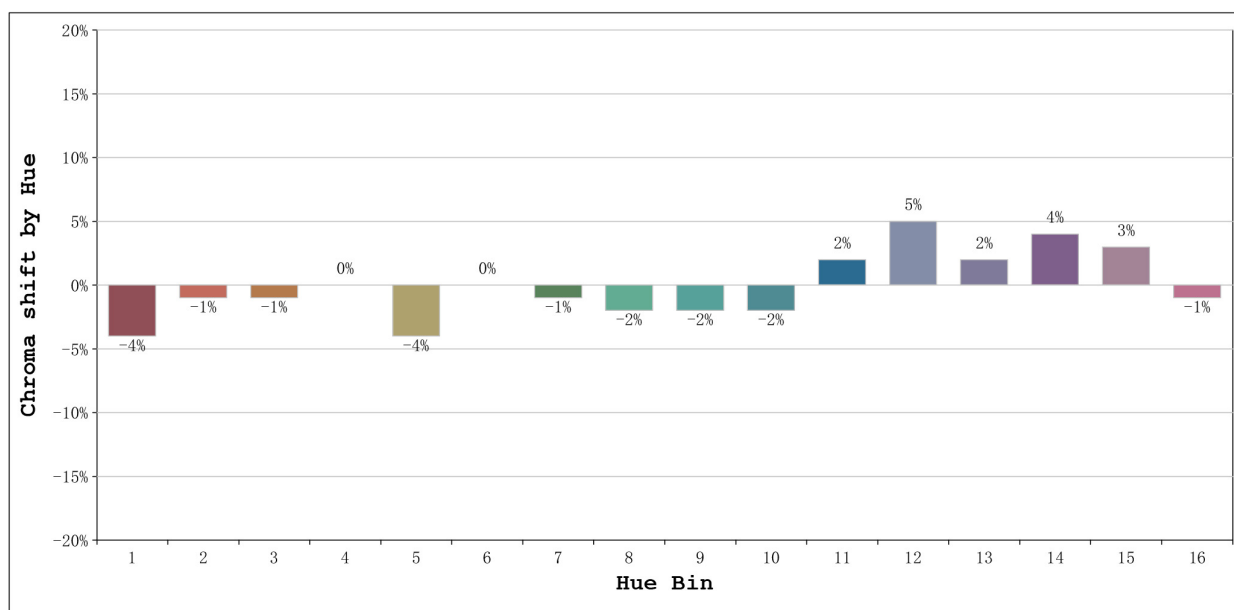
Model:Ecoled COB slim 6000K
 Tester:Sergio Carneros
 Temperature:25Deg
 Manufacturer:Luz Negra S.L.

Number: 31.142
 Date:2023-01-17 15:06:14
 Humidity:57%
 Remarks:100cm de tira flexible



Model:Ecoled COB slim 6000K
 Tester:Sergio Carneros
 Temperature:25Deg
 Manufacturer:Luz Negra S.L.

Number: 31.142
 Date:2023-01-17 15:06:14
 Humidity:57%
 Remarks:100cm de tira flexible



Hue Bin	Hue Angle	Rf	Graphic shift(%)	
			Chroma	Hue
1	0.0° - 22.5°	88	-4	0
2	22.5° - 45.0°	94	-1	0
3	45.0° - 67.5°	92	-1	2
4	67.5° - 90.0°	95	0	2
5	90.0° - 112.5°	89	-4	0
6	112.5° - 135.0°	95	0	0
7	135.0° - 157.5°	94	-1	0
8	157.5° - 180.0°	91	-2	1
9	180.0° - 202.5°	91	-2	4
10	202.5° - 225.0°	82	-2	11
11	225.0° - 247.5°	80	2	12
12	247.5° - 270.0°	88	5	4
13	270.0° - 292.5°	92	2	-3
14	292.5° - 315.0°	87	4	-6
15	315.0° - 337.5°	83	3	-8
16	337.5° - 360.0°	89	-1	-4

Model:Ecoled COB slim 6000K
 Tester:Sergio Carneros
 Temperature:25Deg
 Manufacturer:Luz Negra S.L.

Number: 31.142
 Date:2023-01-17 15:06:14
 Humidity:57%
 Remarks:100cm de tira flexible